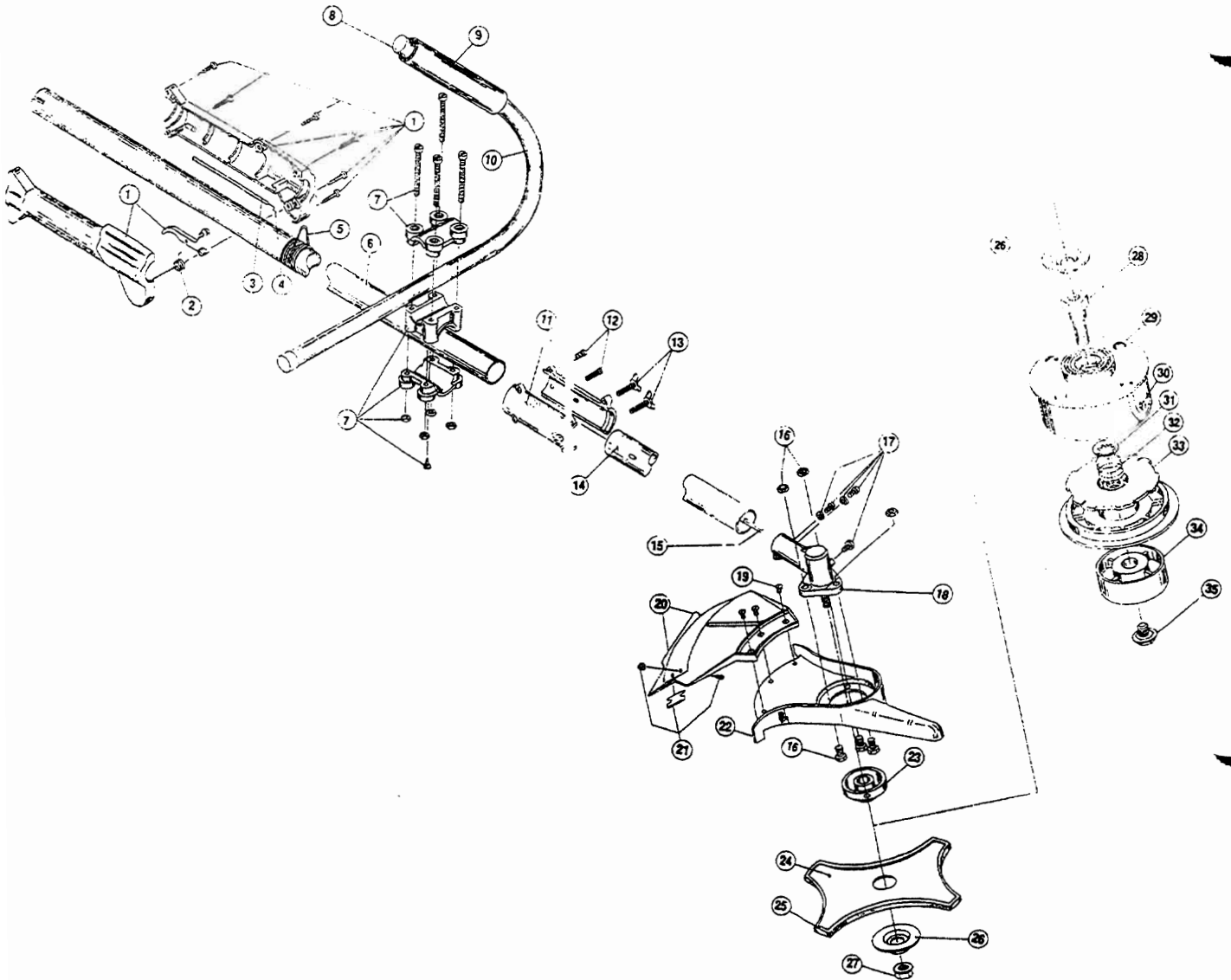




# BOOM AND TRIMMER PARTS-RYOBI 780re



Item	Part No.	Description
1	180277	Throttle Housing and Trigger Assembly
2	610314	Throttle Trigger Spring
3	180021	Throttle Cable Housing
4	180127	Throttle Cable
5	610327	Shoulder Strap Clamp
6	683603	Drive Shaft Housing Assembly
7	683295	Handle Bracket Assembly
8	612021	Tube Closure
9	612831	Grip
10	683870	J-Handle Assembly (items 8 and 9)
11	683605	Split-Boom Coupling Set
12	683606	Coupling Bolt Assembly
13	683607	Adjustment Knob Set
14	180396	Lower Drive Shaft Housing Assembly
15	180198	Flexible Drive Shaft
16	147539	Guard Mount Screws
17	147677	Mounting Hardware and Grease Plug Assembly
18	147488	Gear Box Assembly (items 12, 19, 22 and 23)
19	683304	Guard Mounting Screws
20	180387	Guard and Blade Assembly
21	682061	Blade Assembly
22	147492	Guard Mount
23	147489	Blade Driver

Item	Part No.	Description
24	145873	Blade
25	147670	Blade Cover
26	147490	Blade Retaining Washer
27	147491	Lock Nut
28	612483	Spool Shaft
29	147494	Outer Spool and Eyelet Assembly
30	145566	Eyelet
31	612026	Retainer (10 pack)
32	610636	Spring
33	147495	Inner Reel
34	147496	Bump Head Knob Assembly
35	147676	Bump Head Bolt

### Optional Accessories

- 180120 Monoflail Cutting Line, 50 ft.
- 147345 Spool and Line, 30 ft. (dual line)
- 147498 Complete Head Assembly (28-35)
- 180014 Blade Retaining Kit (items 26 and 27)
- 147299 Locking Rod Tool
- 147541 IDC or Ryobi 2-Cycle Oil (4 oz. can)
- 682075 Shoulder Strap Assembly
- not shown